



Three models available

1589 L THE EXECUTIVE MODEL: in chromium plate for fixing on the rear shelf.

1589 P THE NAVIGATOR MODEL: in chromium plate for fixing on the front fascia.

1589 S THE INSPECTION MODEL: with 30" long semi-stiff metal tube for fixing on the engine compartment bulk head to facilitate adjustment to carburettor, distributor, plugs etc.

All these models have a built-in switch, 12v.-6w. M.C.C. bulb and a suitable length of cable. An anchor clip and fixing screws are provided. Also supplied in 6 volt and 24 volt.

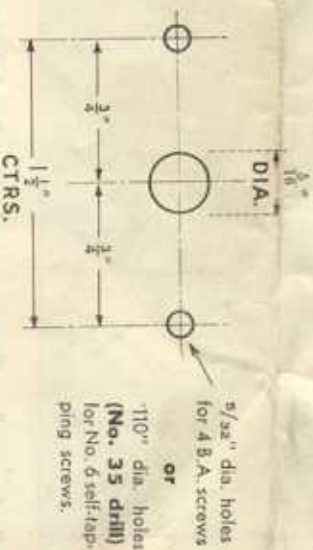
Fitting Instructions

The **Executive** and **Navigator** models are supplied with alternate fixing screws—two No. 6 self-tapping screws for fixing to metal panels, and two standard 4 B.A. nuts and screws for use on other panels.

Executive model. The position for the base should be chosen so that when in use the first few inches of the flexible tube are vertical, as shown in the illustrations overhead. This is most important in ensuring stability of the lamp.

Navigator model. Is preferably mounted on the instrument board capping so that the stalk can be clipped thereon when the unit is not in use.

Three holes should be drilled as in the following sketch. The centre hole provides access for the cable which carries a rubber grommet for fitting into the hole. The two outer holes should be drilled to suit the fixing screws selected.



A clip is provided to anchor the head of the lamp when not in use. Alternative fixing screws are also provided for this. The size of the fixing hole will be $1/8$ " dia. for the 6 B.A. screw, or $3/32$ " dia. (**No. 42 drill**) for the No. 4 self-tapping screw.

CONNECTING UP: The red wire should be run by a convenient path to the fuse unit terminal or control box. To prevent chafing it should be secured at intervals with clips or insulating tape. The black wire should be earthed to the nearest convenient metalwork, although it may be dispensed with when the lamp is fitted to a metal panel provided the base is itself efficiently earthed.

Separate fitting instructions are provided with the inspection model.

Bathurst Ltd

PRESENT

The Flexi-light

IMPROVED MK II TYPE

This versatile lamp has a flexible mounting and is ideal wherever a local beam of screened light is needed. It will hold any position in which it is placed.

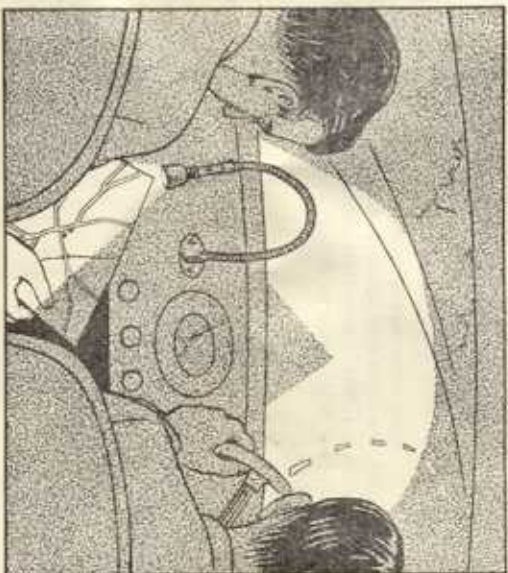
CRANCE ROAD BIRMINGHAM 10
TELEPHONE : VICTORIA 3491-6

Fit a Butlers Flexi-light in your car . . .



For the business executive

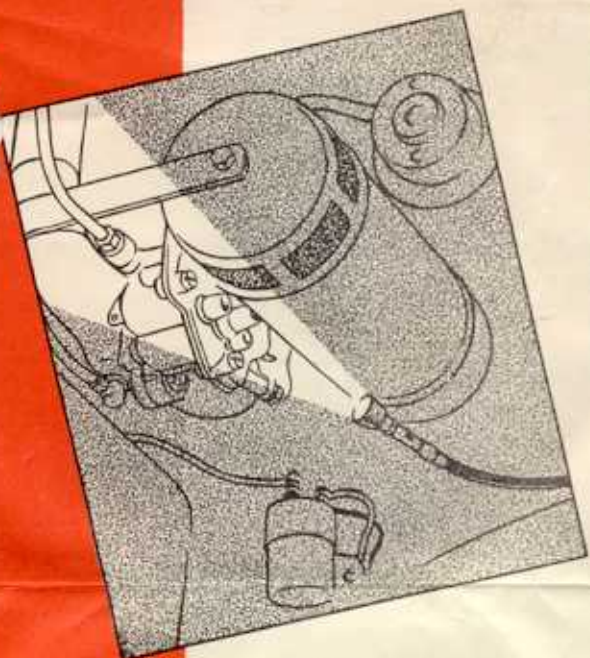
The passenger light which can be directed where it is needed without disturbing the driver. For the busy Executive who wishes to read reports whilst being driven at night—for the rally navigator—for locating those small articles so difficult to find in the dark—these are some of its uses. There is also a special model for mounting as an inspection lamp under the bonnet—simply switch it on and direct the light where it is needed.



Ideal for night-time map-reading



A personal light for your passenger



An under-bonnet inspection light